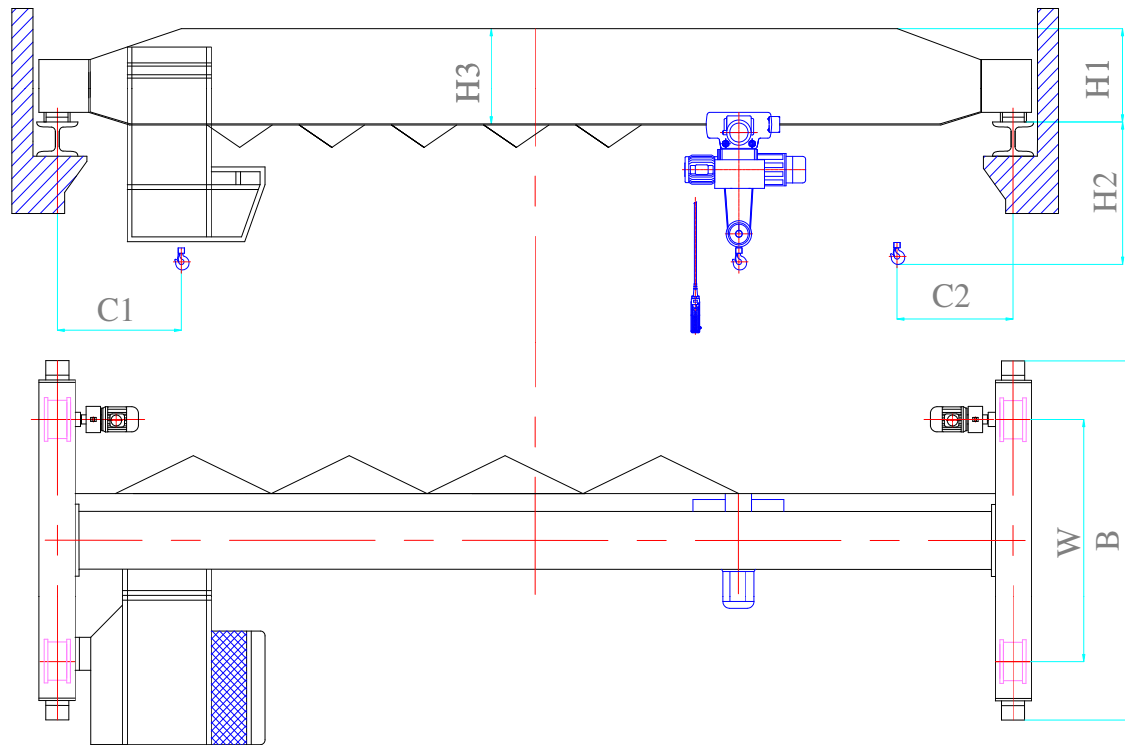


CẦU TRỤC DẪM ĐƠN KIỂU LD (1T-10T)



Tải trọng (T) Load capacity	Khẩu độ (m) Span	Tổng khối lượng	Lực nén lên bánh xe max (T)	Lực nén lên bánh xe min (T)	Kích thước cơ bản (Basic size)						
					H3	B	W	C2	C1	H2	H1
1	7.5	1.67/2.19	1.08/1.31	0.40/0.43	550	2500	2000	796	1274	810	490
	8	1.72/2.24	1.09/1.32	0.41/0.44							
	8.5	1.76/2.28	1.10/1.33	0.42/0.45							
	9	1.82/2.34	1.12/1.35	0.44/0.47							
	9.5	1.86/2.38	1.13/1.36	0.45/0.48							
	10	1.91/2.43	1.14/1.37	0.46/0.49							
	10.5	1.96/2.48	1.15/1.39	0.47/0.50							
	11	2.01/2.53	1.16/1.40	0.48/0.51							
	11.5	2.05/2.57	1.17/1.41	0.49/0.52							
	12	2.10/2.62	1.18/1.42	0.50/0.53							
	12.5	2.19/2.71	1.21/1.45	0.53/0.55	595	3000	2500	796	1274	860	490
	13	2.24/2.76	1.23/1.47	0.55/0.57							
	13.5	2.29/2.81	1.24/1.48	0.56/0.58							
	14	2.33/2.85	1.25/1.49	0.57/0.59							
	14.5	2.44/2.96	1.28/1.52	0.60/0.62							
	15	2.50/3.02	1.30/1.52	0.62/0.64							
	15.5	2.54/3.06	1.31/1.55	0.63/0.65							
	16	2.59/3.11	1.32/1.56	0.64/0.66							
	16.5	2.64/3.16	1.33/1.58	0.65/0.67							
	17	2.70/3.22	1.35/1.60	0.67/0.69							
19.5	3.11/3.63	1.44/1.69	0.76/0.77	650	3500	3000	796	1274	870	530	
22.5	3.54/4.05	1.54/1.79	0.86/0.87	700						580	
	7.5	1.81/2.33	1.64/1.87	0.40/0.44							

2	8	1.86/2.38	1.65/1.88	0.41/0.45	550	2500	2000	871.5	1292.5	1000	490
	8.5	1.90/2.42	1.66/1.89	0.42/0.46							
	9	1.90/2.48	1.68/1.91	0.44/0.47							
	9.5	2.00/2.52	1.69/1.92	0.45/0.48							
	10	2.05/2.57	1.70/1.93	0.46/0.49							
	10.5	2.10/2.62	1.71/1.95	0.47/0.50							
	11	2.15/2.67	1.72/1.96	0.48/0.51	595	3000	2500	870	1290	1060	580
	11.5	2.24/2.76	1.75/1.99	0.51/0.53							
	12	2.29/2.81	1.76/2.00	0.52/0.54							
	12.5	2.38/2.90	1.79/2.03	0.55/0.57							
	13	2.44/2.96	1.81/2.05	0.57/0.59							
	13.5	2.49/3.01	1.82/2.06	0.58/0.60							
	14	2.53/3.05	1.83/2.07	0.59/0.61	700	3500	3000	870	1290	1080	600
	14.5	2.74/3.26	1.87/2.11	0.63/0.65							
	15	2.80/3.32	1.88/2.12	0.64/0.66							
	15.5	2.85/3.37	1.89/2.13	0.65/0.67							
	16	2.91/3.43	1.91/2.15	0.67/0.69							
	16.5	2.96/3.48	1.92/2.17	0.68/0.70							
	17	3.02/3.54	1.93/2.18	0.69/0.71	800	3500	3000	870	1290	1120	785
19.5	3.99/4.51	2.18/2.43	0.94/0.95								
22.5	4.79/5.31	2.38/2.63	1.14/1.15	900							
Tải trọng (T) Load capacity	Khẩu độ (m) Span	Tổng khối lượng	Lực nén lên bánh xe max (T)	Lực nén lên bánh xe min (T)	Kích thước cơ bản (Basic size)						
					H3	B	W	C2	C1	H2	H1
3	7.5	1.88/2.40	2.15/2.38	0.41/0.44	650	2500	2000	820	1290	1150	530
	8	2.01/2.53	2.16/2.39	0.42/0.45							
	8.5	2.06/2.58	2.18/2.41	0.44/0.47							
	9	2.12/2.64	2.19/2.42	0.45/0.48							
	9.5	2.17/2.69	2.20/2.43	0.46/0.49							
	10	2.22/2.74	2.22/2.45	0.48/0.50							
	10.5	2.28/2.80	2.23/2.47	0.49/0.51	700	3000	2500	820	1290	1170	660
	11	2.34/2.86	2.24/2.48	0.50/0.52							
	11.5	2.50/3.08	2.25/2.49	0.52/0.54							
	12	2.56/3.08	2.28/2.52	0.54/0.55							
	12.5	2.62/3.14	2.31/2.55	0.57/0.59							
	13	2.73/3.25	2.32/2.56	0.58/0.60							
	13.5	2.79/3.31	2.34/2.58	0.60/0.62	800	3500	3000	820	1290	1185	745
	14	2.85/3.37	2.35/2.59	0.61/0.63							
	14.5	3.39/3.91	2.48/2.72	0.74/0.76							
	15	3.48/4.00	2.50/2.74	0.76/0.78							
	15.5	3.55/4.07	2.52/2.76	0.78/0.80							
	16	3.62/4.14	2.54/2.78	0.80/0.82							
	16.5	3.70/4.22	2.55/2.8	0.81/0.83	900	3500	3000	820	1210	820	
17	3.79/4.31	2.57/2.82	0.83/0.85								
19.5	4.43/4.95	2.80/3.05	1.06/1.07	1000							
22.5	5.41/5.93	2.94/3.19	1.20/1.21								
	7.5	2.47/2.98	3.28/3.51	0.42/0.46							

5	8	2.55/3.06	3.29/3.52	0.43/0.47	720	2500	2000	840	1300	1380	580
	8.5	2.62/3.13	3.30/3.53	0.44/0.48							
	9	2.68/3.19	3.32/3.55	0.46/0.49							
	9.5	2.75/3.26	3.33/3.56	0.47/0.50							
	10	2.83/3.34	3.35/3.58	0.49/0.52							
	10.5	2.90/3.41	3.36/3.60	0.50/0.53							
	11	2.95/3.47	3.37/3.61	0.51/0.54							
	11.5	3.13/3.65	3.48/3.72	0.62/0.64	800				1400	660	
	12	3.20/3.72	3.50/3.74	0.64/0.66							
	12.5	3.31/3.83	3.53/3.77	0.67/0.69							
	13	3.40/3.92	3.55/3.79	0.69/0.71							
	13.5	3.47/3.99	3.57/3.81	0.71/0.73	900	3000	2500			1415	785
	14	3.55/4.07	3.59/3.83	0.73/0.75							
	14.5	3.84/4.36	3.68/3.92	0.82/0.84							
	15	3.94/4.46	3.70/3.94	0.84/0.86							
	15.5	4.02/4.54	3.72/3.96	0.86/0.88							
	16	4.11/4.63	3.74/3.98	0.88/0.90							
	16.5	4.19/4.71	3.76/4.01	0.90/0.92							
	17	4.28/4.80	3.78/4.03	0.92/0.94	1000	3500	3000			1400	820
19.5	5.08/5.60	4.06/4.31	1.20/1.21								
22.5	6.28/6.80	4.36/4.61	1.50/1.51								
				1100						1485	875
Tải trọng (T) Load capacity	Khẩu độ (m) Span	Tổng khối lượng	Lực nén lên bánh xe max (T)	Lực nén lên bánh xe min (T)	Kích thước cơ bản (Basic size)						
					H3	B	W	C2	C1	H2	H1
5	7.5	2.47/2.98	3.28/3.51	0.42/0.46	720	2500	2000	840	1300	1380	580
	8	2.55/3.06	3.29/3.52	0.43/0.47							
	8.5	2.62/3.13	3.30/3.53	0.44/0.48							
	9	2.68/3.19	3.32/3.55	0.46/0.49							
	9.5	2.75/3.26	3.33/3.56	0.47/0.50							
	10	2.83/3.34	3.35/3.58	0.49/0.52							
	10.5	2.90/3.41	3.36/3.60	0.50/0.53							
	11	2.95/3.47	3.37/3.61	0.51/0.54	800				1400	660	
	11.5	3.13/3.65	3.48/3.72	0.62/0.64							
	12	3.20/3.72	3.50/3.74	0.64/0.66							
	12.5	3.31/3.83	3.53/3.77	0.67/0.69							
	13	3.40/3.92	3.55/3.79	0.69/0.71	900	3500	2000			1415	785
	13.5	3.47/3.99	3.57/3.81	0.71/0.73							
	14	3.55/4.07	3.59/3.83	0.73/0.75							
	14.5	3.84/4.36	3.68/3.92	0.82/0.84							
	15	3.94/4.46	3.70/3.94	0.84/0.86							
	15.5	4.02/4.54	3.72/3.96	0.86/0.88							
	16	4.11/4.63	3.74/3.98	0.88/0.90							
	16.5	4.19/4.71	3.76/4.01	0.90/0.92	1000	2500	3000			1400	820
17	4.28/4.80	3.78/4.03	0.92/0.94								
19.5	5.08/5.60	4.06/4.31	1.20/1.21								
				1100						1485	875
	7.5	3.39/3.91	5.49/5.72	0.44/0.48							

10	8	3.48/4.00	5.51/5.74	0.46/0.49	900	2500	2000	1230	1830	1470	745
	8.5	3.57/4.09	5.53/5.76	0.48/0.51							
	9	3.69/4.21	5.56/5.79	0.51/0.54							
	9.5	3.77/4.29	5.58/5.81	0.53/0.56							
	10	3.87/4.39	5.60/5.83	0.55/0.58							
	10.5	3.99/4.51	5.62/5.86	0.57/0.60							
	11	4.08/4.59	5.65/5.89	0.60/0.62							
	11.5	4.36/4.88	5.71/5.95	0.66/0.68	1000	3000	2500	1495	820		
	12	4.46/4.98	5.73/5.97	0.68/0.70							
	12.5	4.64/5.13	5.76/6.00	0.70/0.72							
	13	4.71/5.22	5.78/6.02	0.73/0.75							
	13.5	4.83/5.35	5.81/6.05	0.76/0.78							
	14	4.93/5.45	5.83/6.07	0.78/0.80	1100	3500	3000	1540	855		
	14.5	5.10/5.62	5.92/6.16	0.87/0.89							
	15	5.20/5.72	5.95/6.19	0.90/0.92							
	15.5	5.33/5.85	5.98/6.22	0.93/0.95							
	16	5.43/5.95	6.00/6.24	0.95/0.97							
	16.5	5.53/6.05	6.03/6.28	0.98/1.00	1150	3500	3000	1600	865		
	17	5.62/6.14	6.05/6.30	1.00/1.02							
	19.5	6.69/7.21	6.32/6.57	1.27/1.28							
22.5	7.76/8.28	6.60/6.85	1.55/1.56	1200					1640	875	

CÔNG TY SHUNDENG TECHNOLOGY

Chuyên :

- Thiết kế nhà xưởng
- Thi công nhà xưởng
- Gia công kết cấu thép
- Lắp đặt cầu trục nhà xưởng

Hotline : 0979 012 177 (Ms. Thắm)